

Scope-Pro[®]

PLUG-IN

An Image-Pro[®] Solution

Automate the movement of your microscope and/or stage

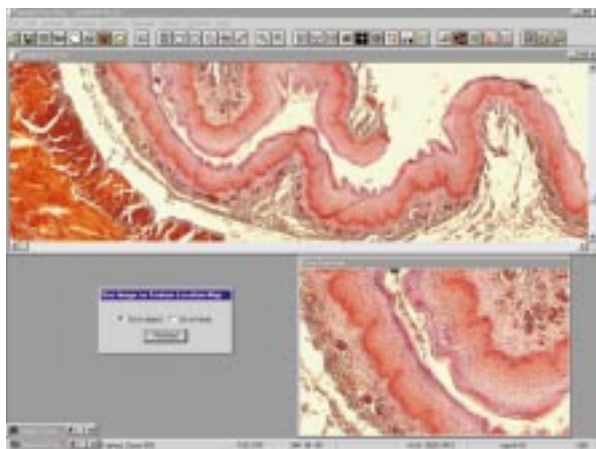


Image Feature Map for locating features of interest

AUTOMATICALLY CONTROL COMPLEX MICROSCOPY EQUIPMENT IN A SIMPLE AND REPEATABLE MANNER

Scope-Pro is designed for Image-Pro Plus and Image-Pro Express users who want to control and program the movement of their automated microscope and/or stage. This plug-in allows you to:

- ▶ Control complex microscopy equipment in a simple, repeatable manner for reproducible results
- ▶ Reduce the need to place your eye to the ocular during image acquisition
- ▶ Virtually eliminate the need to manually adjust microscope controls
- ▶ Automate repetitive routines for better quality control and increased efficiency

POINT AND CLICK SIMPLICITY SAVES YOU TIME

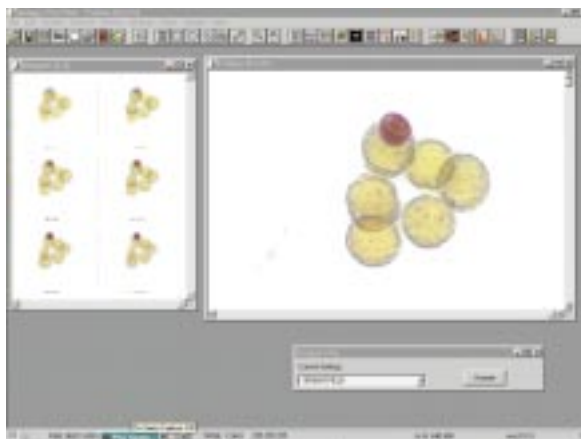
Standard point-and-click functions of the stage control include single step movement in any X, Y, or Z direction. Scope-Pro also controls your motorized filter wheels, shutters, filter sliders, and lamp settings.

Individual configurations of all your automated equipment can be saved and returned to by simply selecting the configuration name. Once a configuration is selected, all of the components automatically move to the desired positions. Manual components are supported too, and a reminder message box appears whenever a manual component needs to be adjusted for a particular configuration.

Hardware configuration is done through an easy-to-use tab dialog, allowing user specification of component types and names. Image acquisition is also integrated into Scope-Pro, use a single command or press a button to capture an image with a desired microscope setting.

JUST SOME OF SCOPE-PRO'S FEATURES INCLUDE:

- ▶ Software control of microscope hardware, including several brands of filter wheels, shutters, stages, and automated microscopes
- ▶ Repeatable settings for all optical parameters associated with an image capture
- ▶ Capture Z-stacks of images as a stack or sequence



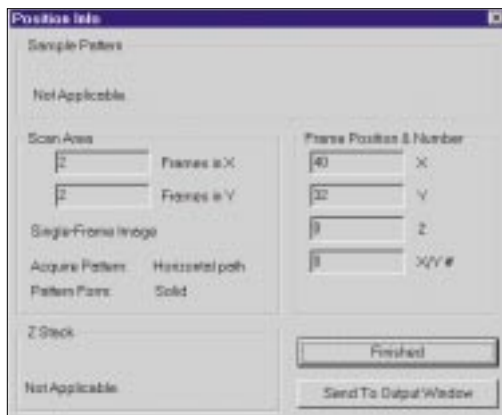
Capture and save Z-stacks of images

- ▶ Stage scanning and auto-focus algorithms for both brightfield and fluorescence microscopy automate the generation of sharp Z-Stack composite images
- ▶ Options for creating composite Z-stack images with an extended depth of field are also included
- ▶ Measurement of X, Y and/or Z distances
- ▶ Save X, Y, Z, and T information with image
- ▶ Tiled image capture allows you to assemble X by Y frames into a single, high-resolution image from a scanned specimen
- ▶ New Feature Map tool allows you to capture high-resolution images as a feature map
- ▶ Support for multiwell plates and multiple microscope slide holders



Scope-Pro includes pre-defined multiwell plate patterns for easy set-up

- ▶ Combine wells in a multiwell plate into experimental groups
- ▶ Control the shutter to minimize light exposure and reduce photobleaching
- ▶ Easy and automated fluorescence image acquisition
- ▶ Prompt for manual light path items that are not motorized
- ▶ Automate repetitive functions and movements by recording them in an Auto-Pro* macro or Visual Basic program
- ▶ Incorporate any of Image-Pro's 200+ analysis and processing routines



Retain vital image information when capturing images though Scope-Pro

SYSTEM REQUIREMENTS:

- ▶ Image-Pro Plus Version 4.0 or better OR
- ▶ Image-Pro Express Version 4.0 or better
- ▶ Pentium 166 MHz or higher
- ▶ 32 MB of RAM
- ▶ Microsoft Windows 95/98 or NT v4.0

SCOPE-PRO SUPPORTS THE FOLLOWING EQUIPMENT:

Automated Microscopes

- ▶ Zeiss AxioPlan 2 microscope
- ▶ Olympus Provis AX-70/80
- ▶ Leica DMRXA
- ▶ Nikon E1000

Automated Stages, Filter Wheels, and Shutters

- ▶ Ludl BioPoint controller and stages
- ▶ Ludl MAC 2000 controller for stages, filter wheels, and shutters
- ▶ Prior H128 series controller and stages
- ▶ Prior Optiscan controller and stages
- ▶ Märzhäuser MultiControl 2000 controller and stages
- ▶ Märzhäuser L-Step controller and stages
- ▶ Sutter Lambda 10-2 and 10-C filter wheels and shutters
- ▶ Vincent Associates shutters
- ▶ Nikon Remote Focus Motor attachment

Please note that certain software functionality is dependent upon hardware configuration. Please contact your dealer for more details.

**Image-Pro Express does not support Auto-Pro macros or macro recording.*

Media Cybernetics, L.P.

8484 Georgia Avenue
Silver Spring, MD 20910 USA

North America: +1.301.495.3305;

Fax +1.301.495.5964

Europe: +31.715.730.639; Fax +31.715.730.640

Asia Pacific: +65.245.4965; Fax +65.245.4967

Latin America: +55.11.49.906.386 (Telephone & Fax)

email: info@mediacy.com

<http://www.mediacy.com>

©1999 Media Cybernetics. All trademarks and registered trademarks are property of their respective owners.